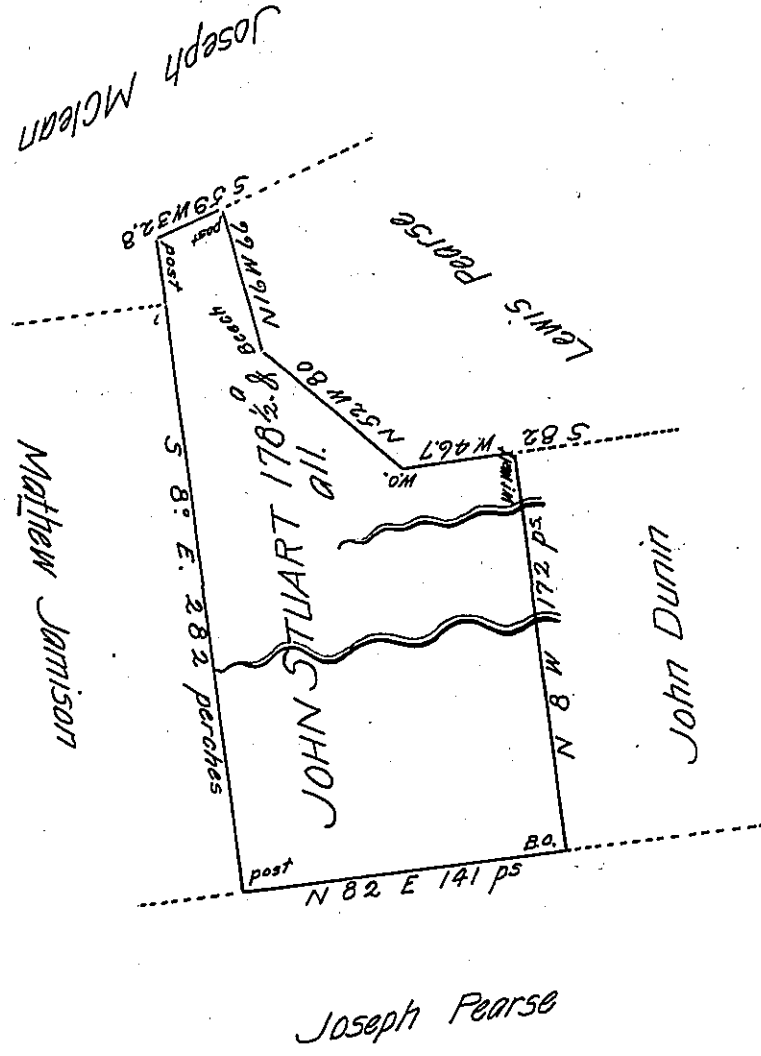


A. 5. 302



Situate between Monongahela and Youghiogeni Rivers in Rostraver Township <sup>Westmoreland</sup> ~~Fayette~~ County  
 and Surveyed the 27<sup>th</sup> day of March 1788. In pursuance of a Warrant Dated the 14<sup>th</sup>  
 day of December 1785.

Per Alexander McLean Deputy

To John Lukens Esquire  
 Surveyor General

IN TESTIMONY that the above is a copy of the original remaining on file in  
 the Department of Internal Affairs of Pennsylvania, made  
 conformably to an Act of Assembly approved the 16th day of  
 February, 1833, I have hereunto set my Hand and caused  
 the Seal of said Department to be affixed at Harrisburg,  
 this Sixteenth day of November 1906.

*George B. Brown*  
 Secretary of Internal Affairs.